

MERLENN: A Crisis &  
Incident Management  
Support System for All.

# ARE YOU READY?

**It's a sunny day and all is well....until it isn't. The time to consider and act on the inevitable is now, not then. Crisis & Incident Command Decision Support Systems (DSS) are large, complex, expensive, and difficult to use; that is until...MERLENN.**

## **Counterspherics Inc.**

Technology for Operating at the Speed of Now!

*Counterspherics...engineers of MERLENN™, a Real-time Contingency (Emergency) Decision Support System when preparing for, responding to, recovering from Human, Atmospheric, Geological, and Biological Threats.*

# UNFORTUNATELY..."WHEN THE WORST" COMES KNOCKING THE ANSWER IS...USUALLY NOT!



## What is MERLENN?™

**MERLENN™** is a specialized Crisis & Incident Command Decision Support System (CICS/DSS) and Infrastructure focused on Contingency (Emergency) Prevention, Preparation, Coordination, Management, and Business Continuity. **MERLENN™** is a connected **Internet of Things (IoT) technology** Appliance a.k.a. Microsystem – meaning, a piece of hardware with precisely engineered software and Web (**Cloud**) Services for the purpose of preparing for, responding to, and recovering from...any threat to your business.

- ◆ **MERLENN™ focuses** on the underspecified problem which upper level coordinators & managers typically face;
- ◆ **MERLENN™ combines** the use of models and analytic techniques with traditional information access and retrieval actions;
- ◆ **MERLENN™ uses** point-n-click interactive features easy to use by non-computer-proficient people; and
- ◆ **MERLENN™ emphasizes** system flexibility, adaptability, and expandability to change with the strategic business and business operations with decision approaches which are coordinated, managed, and executed upon by **MERLENN™** Operators.

## A stylized illustration of a modern building with large glass windows and a flat roof. A person is standing on the roof, and another person is visible through one of the windows. The sky is yellow with stylized clouds, and the foreground shows a paved area and some greenery.

MERLENN™ Copyright ©2018 by Counterspherics Labs Inc., All Rights Reserved

## LOCAL TO GLOBAL REACH



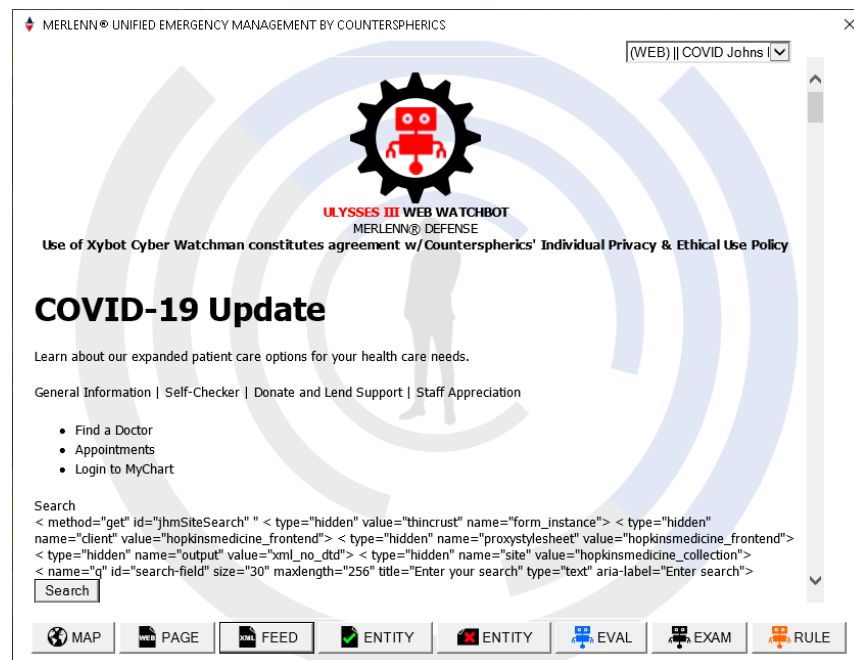
As a business you cannot afford to ignore your landscape. It's not about avoiding trouble because who can...really? Trouble is a part of doing business whether logistical, financial, physical, natural, or human-centric. **MERLENN™** does not necessarily stop you from experiencing trouble, though it quite possibly can, rather, helps you plan for it, execute a roadmap for navigating your way through and or around the impacts to your operations. Over 47% of small business vanish after a major crisis...why? Failure to have a plan and the capability needed to support and execute that plan. If you can use a "mouse" you can use **MERLENN™**! **MERLENN™** enables both strategic and operational planning to include local, national, and global assessment in its purview. Schools and Travel companies for instance can evaluate a country's terror threats down to specific cities and groups to provide forewarning and increased avoidance awareness. So too, the natural hazards and the country's ability to protect and provide aid to its citizens and visitors in the event of a natural disaster. All businesses are vulnerable to Human threats (**active shooters, workplace violence, chemical spills, mass catastrophes, worker safety, cyber-attacks, power outages, global/home grown terrorism**); Atmospheric (**oceans, floods, droughts, storms, weather-based**); Geologic (**avalanche, volcanic, earth-based**); and Biological hazards (**outbreak, infectious disease, pandemic-based**) to name just a few. **MERLENN™** provides mass notifications alerts, and advisories to include **Safety and Wellness** accounting for employees and customers. **MERLENN™ has 48+ interactive *Crisis Incident Command System (CICS)* checklists/workflows which directly addresses over 117+ threats and hazards with the ability to address any threat, singular or multiple at the same time.**

## CHANCES ARE YOUR UTILITY BILL COSTS MORE...

The **\$167.00** a month price point removes any cost barrier to not having a DSS covering your business. If having a piece of hardware to is an issue, **MERLENN™** also comes as a monthly consulting service for the same price. If DIY is not your style then initial costs for business consulting to custom configure and align processes, plans, methods, and procedures will apply; typically, \$3500 for a small organization.

*Real-time point-n-click system SMS text messaging makes communication fast and simple. Chronological Logging allows for Resource Monitoring.*

**MERLENN™** has a full Resource Management System (Logistics) built in. This allows for resource (People, Service, Supply, Equipment) tracking, costing, tasking, and monitoring. Quickly assess real-estate asset restoration, liability, hazmat, predictive analysis and more. Assess and report on operational gains and losses. Plan for alternate operations decisions, costs, capability, and more using **MERLENN's™** Integrated Business Continuity Engine



Understanding that **MERLENN™** is the brain of a Peer-to-Peer (machine to direct machine) and Cloud (Internet) Hybrid technology ecosystem, is also to understand it is infinitely expandable and therefore extensible. The **Multi-Emergency Response Linked Emergency Notification Network** microsystem appliance uses proprietary **MERLENN™** Cloud Hub Station Technology to communicate with other **MERLENN™** Appliances and microservices. Every Appliance operates on its own or as part of **MERLENN's™ Private Cloud Service**. The Private Cloud Service is a community of your **MERLENN™** appliances or your trusted partner systems, as part of a Secure and Portable Mobile **MESH** network allowing a real-time. "Speed of Now" response to any crisis, anytime, anywhere. **MERLENN™** goes where you go!



# MERLENN™ PORTABLE DECISION SUPPORT SYSTEM CORE CAPABILITIES

## CRISIS & CONSEQUENCE (Incident) PLANNING

### Real-time Emergency Operations Plan (EOP) Digital Document Component

Emergency Operations Plan  
EOP Dissemination  
EOP Editing  
EOP Activation  
Threat/Hazard Appendices  
CMS, OSHA, CLERY Compliance  
Global Terror by Country Info  
Global Terror by Country Risk  
Global Hazard by Country Info  
Global Hazard by Country Risk  
Biological Threat/Hazard Info  
Local Threats/Hazards  
Active Incident Activity Metric  
Active Incident Duration Metric  
Active Resources Summary Metric  
Emergency Prep Rule Compliance

## SAFETY COORDINATION (Response) & MANAGEMENT

### Real-time OSHA Event Coordination Component

Safety Event Logging  
OSHA Event Identification  
OSHA Safety Logistics  
OSHA Event Mass Alerting  
Employee Safety/Wellness Monitoring  
Logistics Resource Management  
Mass Safety Alerts & Notification  
Targeted Location Mass Alerting  
Safety Decisions Workflows  
Safety Workflow Mapping  
OSHA Compliance

## TRAINING

### Real-time Emergency Preparedness eLearning and Testing Component

Test Design & Publishing  
Training Compliance Monitoring  
Test taking (Online)  
Emergency Prep Rule Compliance

## EMERGENCY COORDINATION (Response) & OPERATIONS

### Real-time Incident Coordination Component

Emergency Incident Logging  
Threat Identification  
ULYSSES III Cyber Intelligence Agent  
Emergency Logistics  
Incident Mass Alerting, Advisories  
Workflow Accountability Mapping  
Targeted Location Mass Alerting  
Employee Safety/Wellness Monitoring  
Logistics Resource Management  
Emergency Decisions Workflow  
Workflow Accountability Mapping  
DHS FEMA & OSHA Compliance  
NIMS Recommendation Compliance  
Emergency Prep Rule Compliance  
Contact Tracing

## BUSINESS CONTINUITY & OPERATIONS

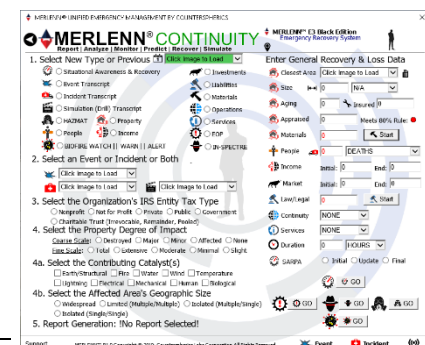
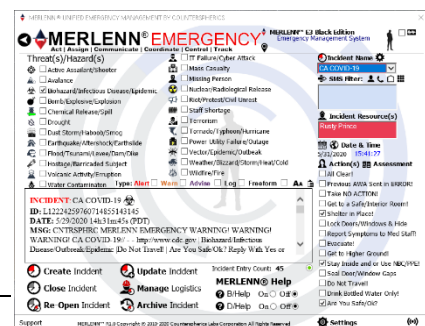
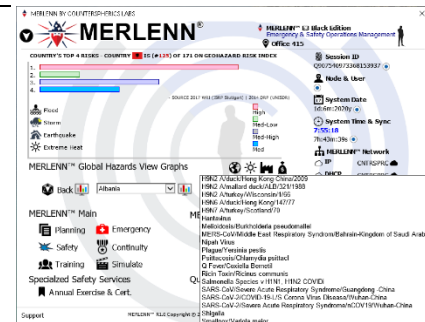
### Real-time Business Continuity Component

Real Estate Restoration Costing  
Threat/Hazard Reporting  
HAZMAT Reporting  
Enhanced FEMA Reporting  
Financial Assessment  
Operational Cost Assessment  
Operation Impact Assessment  
INSPECTRE Human Threat Prediction  
BIOFIRE Biological Fire Prediction  
Role & Responsibility Mapping  
First Responder Tracking  
Simulation Outcome Reporting  
Training Compliance Reporting  
Liability Loss Assessment  
OSHA Reporting

## SIMULATION/DRILLS

### Real-time / Real World Contingency (Emergency) "Fire Drilling" Component

Emergency Incident Simulation  
Mass Participant Alerting  
Simulation Documentation  
Emergency Prep Rule Compliance



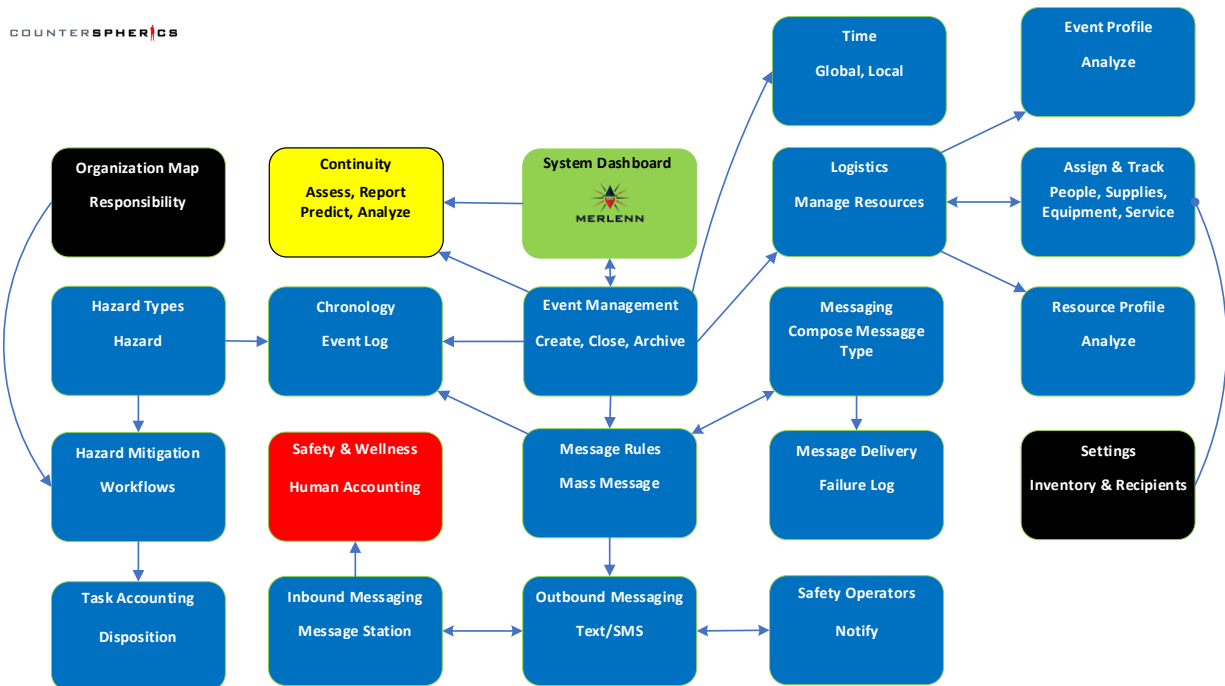
# MERLENN™ BUSINESS CONTINGENCY INCIDENT CAPABILITY (EMERGENCY) MAP (CRISIS) – CICS

## ONE POINT-N-CLICK SYSTEM REDUCES YOUR EMERGENCY MANAGEMENT COMPLEXITY!



## MERLENN™ BUSINESS CONTINGENCY EVENT CAPABILITY (SAFETY) MAP (OSHA) - CICS

## ONE POINT-N-CLICK SYSTEM REDUCES YOUR EMERGENCY MANAGEMENT COMPLEXITY!



COUNTERSPHERICS

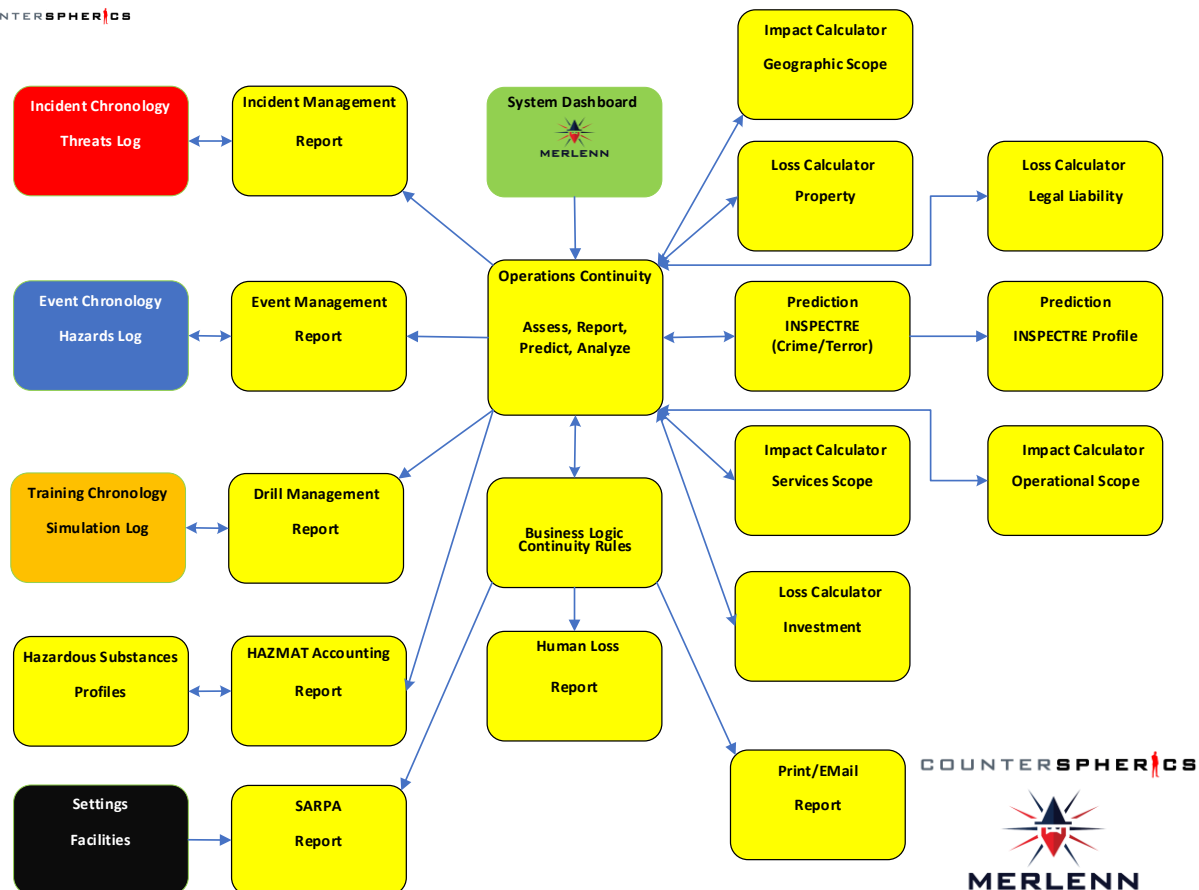




# MERLENN™ BUSINESS CONTINGENCY CONTINUITY CAPABILITY MAP

ONE POINT-N-CLICK SYSTEM REDUES YOUR EMERGENCY MANAGEMENT COMPLEXITY!

COUNTERSPHERICS



# THE THREAT CLOCK IS TICKING!

Be Ready for \$167.00/Month!

## SYSTEM CAPABILITIES

- 
- 
- ☐ 48 Threat/Hazard Interactive Workflows
  - ☐ 117+ Threat Hazard Workflow Contexts
  - ☐ Actionable Chronology of Incidents
  - ☐ Actionable Chronology of Events
  - ☐ Communications (Safety & Emergency)
  - ☐ Casualty & First Responder Tracking
  - ☐ Emergency & Safety Coordination
  - ☐ Emergency Location Tracking
  - ☐ Emergency Planning & Inventory
  - ☐ Disaster Recovery Cost Estimation
  - ☐ EMS / OSHA / Other Compliance
  - ☐ Cyber Surveillance
  - ☐ Document Generation (Reports)
  - ☐ Facility & Occupant Safety Accounting
  - ☐ FEMA Aligned Reports
  - ☐ Global Hazard Protective Intelligence
  - ☐ Global Threat Protective Intelligence
  - ☐ Local/National Protective Intelligence
  - ☐ Hazard Vulnerability Assessment
  - ☐ Hazard Mitigation
  - ☐ HAZMAT Storage/Spill Accounting
  - ☐ Human Loss & Injury Accounting
  - ☐ Human Threat-risk Prediction
  - ☐ Human Threat Identification
  - ☐ ICS 209 Enhanced Equivalent Reporting
  - ☐ Incident Cost Estimation
  - ☐ Incident/Event Operations Analysis
  - ☐ Incident Intelligence Gathering
  - ☐ Incident Impact Sizing
  - ☐ Individual 911 Conflict Alerting
  - ☐ Person to System 2-Way Messaging
  - ☐ Life/Wellness Accounting
  - ☐ Logistics (Resource Management)
  - ☐ Logistics (Supply Management)
  - ☐ Logistics (Equipment Management)
  - ☐ Logistics (Service Management)
  - ☐ Monitoring (Safety & Emergency)
  - ☐ Natural Hazard Identification
  - ☐ Organizational Responsibility Mapping
  - ☐ OSHA Online Learning
  - ☐ Operations Continuity Assessment
  - ☐ Planning & Execution (Continuity)
  - ☐ Precise Alerts, Warnings, & Advisories
  - ☐ Preparedness Simulation
  - ☐ Reunification (Individual/Family)
  - ☐ Response Dispatch
  - ☐ Situational Awareness Messaging
  - ☐ Structural Damage Assessment
  - ☐ Structural Rebuild Cost Estimation
  - ☐ Structural Insurability Assessment



# STAY PREPARED!

**Distributed By**

Counterspherics Inc.  
30 Gould St., STE 27064  
Sheridan, WY 82801

**Contact**

Henrie Watkins  
Specialized Safety Services  
909-376-9530

Phone (877) 205-1124 Ext. 1537  
Learn more at [www.counterspherics.com](http://www.counterspherics.com)