

COUNTERSPHERICS LABS



Welcome to MERLENN™

The Multiple Emergency Response Linked Emergency Notification Network

Enterprise-Grade, Point-n-Click Operation, Secure, Affordable, Portable, & Limitless...Emergency Management!

Man-made Threat & Natural Hazard Planning

- CMS, CLERY, FEMA, OSHA compliance and or aligned
- Portable Microsystem Laptop Appliance
- Global Terrorism Risks intelligence data graphs by country & region
- Global Natural Hazard Risks intelligence data graphs by country & region
- Localized State Natural Hazard Risk intelligence data graphs & region
- Local and or Global Multi-Factor at-a-glance Active Incident Analysis

Operational Crisis & Consequence Planning

- CMS, CLERY, FEMA, OSHA compliance and or aligned
- Emergency Operations Plans (EOP) (CMS, FEMA ICS 206, 207, 208)
- Local and or Global Multiple Crisis/Consequence EOP Management
- 24 Threat/Hazard Selectable Areas for EOP Customization
- Federal, State, EOP Compliance (CMS, HIPAA, NIST, CLERY, OSHA)
- Selectable EOP Output Formatting (Integrated or Annexes)
- Selectable Plan Print and or Email Plan Dissemination
- 24 Crisis (Pre-Incident) Checklist & EOP Customizations
- 24 Consequence (Incident Response) Checklist & EOP Customizations

Crisis (Pre-Incident) Mass Notification

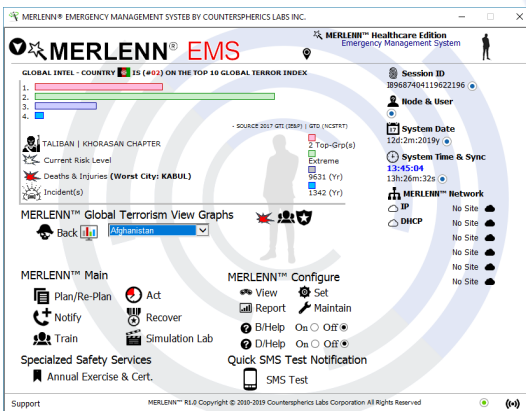
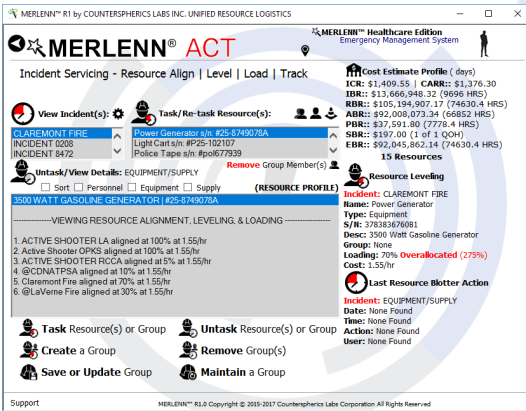
- CMS, CLERY, FEMA, OSHA compliance and or aligned
- Mass Notification of Developing Threats/Hazards (CMS, OSHA, FEMA, ICS 210)

Consequence (Incident Response) Mass Alerting

- CMS, CLERY, FEMA, OSHA compliance and or aligned
- Simultaneous Local, National, and Global, Multiple Emergency Management
- Local Mass Action Alerting for In Progress Threats and or Hazards
- Preformatted & Free Formatted Message Composition
- Preformatted FAST™-based Sentence & "Sematicon™" Messaging
- Global Mass Action Alerting for in-progress Threats and or Hazards
- Unified Coordination, Logistics, Command, & Control (CMS, OSHA, FEMA)
- Mass Alerting for all Lives on the System (CLERY, CMS, OSHA, FEMA ICS 208, 213)
- Mass Alerting Groups, States, Counties, Zip and or Area Codes
- Alert, Warn, Advise, and Log of Actions (CLERY, CMS, OSHA, FEMA ICS 213, 214)
- Resource Logistics Mgt. (FEMA ICS 204, 205, 210, 213RR, 215, 218)
- Resource Engagement (CMS, FEMA ICS 204, 205A, 210, 211)
- Incident Status Summary Management (FEMA ICS 209)
- Incident Response Checklists (CMS, OSHA, FEMA ICS 202, 203, 221, 233CG)
- Incident Active, Closed, & Archival Operations (CMS, OSHA)
- Incident Threat/Hazard Voice Audible Confirmation
- Incident Analytics & Reporting (CLERY, CMS, OSHA, FEMA)

Recovery, Training, Inventory, People, & Configuration Mgt.

- CMS, CLERY, FEMA, OSHA compliance and or aligned
- Drill & Simulate Emergency Planning & Response Actions (CMS, OSHA)
- Send and Record Preparedness Tests & Quizzes (CMS, OSHA)
- Configure Association, Business, Group, Event, and or Organization Information
- Configure System Information & Operation Functions

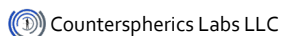


\$167.00/month | \$2000/year

3000 Text or Voice Credits/System

MERLENN™ SMS Fees Apply .04/text after initial exhaust

MERLENN™ VoIP Call Rates Apply .04/voice call after initial exhaust



1.877.205.1124 | 1.909.786.3362

contact@counterspherics.com • www.counterspherics.com

National: 30 N. Gould St. Ste. R, Sheridan, WY 82801 | California: 2058 N. Mills Ave 347, Claremont, CA 91711